

DIAPHRAGM VACUUM PUMP

LABOPORT® SD N 820.3 FT.40.18



Technical features

- 100 % oil-free transfer – thereby pure transferring and evacuation of gases
- Integrated KNF self-drying system ensures that condensate is quickly removed from the pump heads without the vacuum being altered. This significantly reduces process time and preserves the pump heads.
- Chemically resistant and thus ideal for use with extremely aggressive/corrosive gases and vapors
- Maintenance-free
- Environmentally friendly

Technical data

Flow rate [m ³ /h] at atm. pressure	1.2
Flow rate [l/min] at atm. pressure	20
Ultimate vacuum [mbar abs.]	10
Operating pressure [bar g]	1
Voltage [V]	230
Frequencies [Hz]	50
Motor protection	IP 44
Power P ₁ [W]	120
Operating current [A]	0.7
With thermal switch and power fuse	
Motors with other voltages and frequencies on request	

MATERIALS

Pump head	PTFE
Diaphragm	PTFE-coated
Valves	FFPM

OTHER DATA

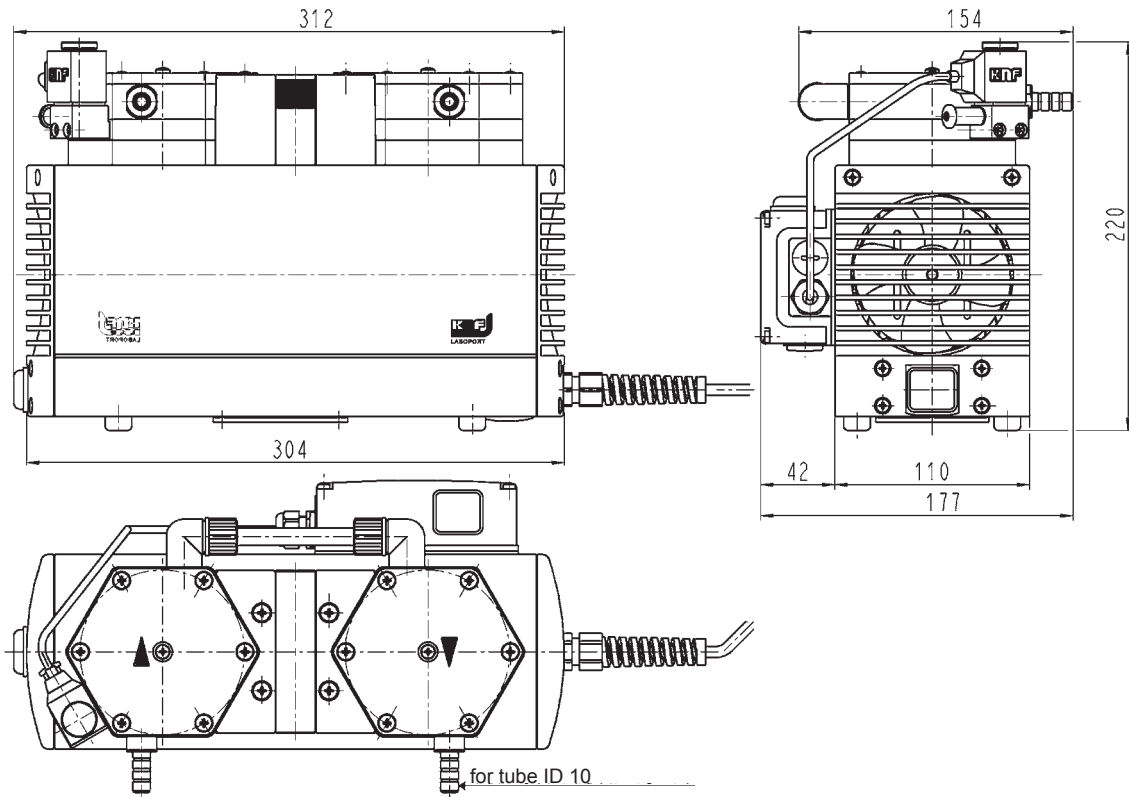
Weight [kg]	9.6
Hose connections	ID 10
Dimensions W x H x D [mm]	177 x 220 x 312
Permissible media and ambient temperature [°C]	+5 ... +40

ACCESSORIES

	ID
Spares kit	057358

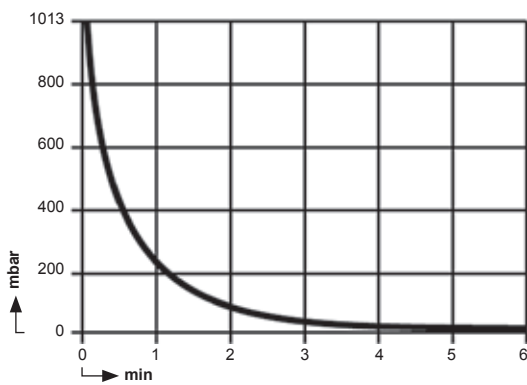
Dimensions

N 820.3 FT.40.18

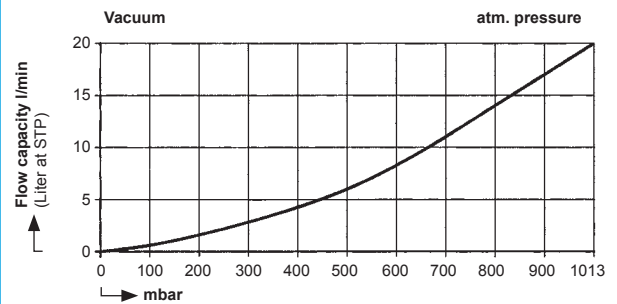


Performance characteristics

PUMP DOWN TIME FOR 10 LITER VESSEL



FLOW CAPACITY



DIAPHRAGM VACUUM PUMP

LABOPORT® SD N 840.3 FT.40.18



Technical features

- 100 % oil-free transfer – thereby pure transferring, evacuation and compression of gases
- Integrated KNF self-drying system ensures that condensate is quickly removed from the pump heads without the vacuum being altered. This significantly reduces process time and preserves the pump heads.
- Chemically resistant and thus ideal for use with extremely aggressive/corrosive gases and vapors
- Maintenance-free
- Environmentally friendly
- Gastight, leakage rate approx. 6×10^{-3} mbar x l/s, not tested in serial production

Technical data

Flow rate [m ³ /h] at atm. pressure	2.04
Flow rate [l/min] at atm. pressure	34
Ultimate vacuum [mbar abs.]	10
Operating pressure [bar g]	1
Voltage [V]	230
Frequencies [Hz]	50
Motor protection	IP 44
Power P ₁ [W]	245
Operating current [A]	1.5
With thermal switch and power fuse	
Motors with other voltages and frequencies on request	

MATERIALS

Pump head	PTFE
Diaphragm	PTFE-coated
Valves	FFPM

OTHER DATA

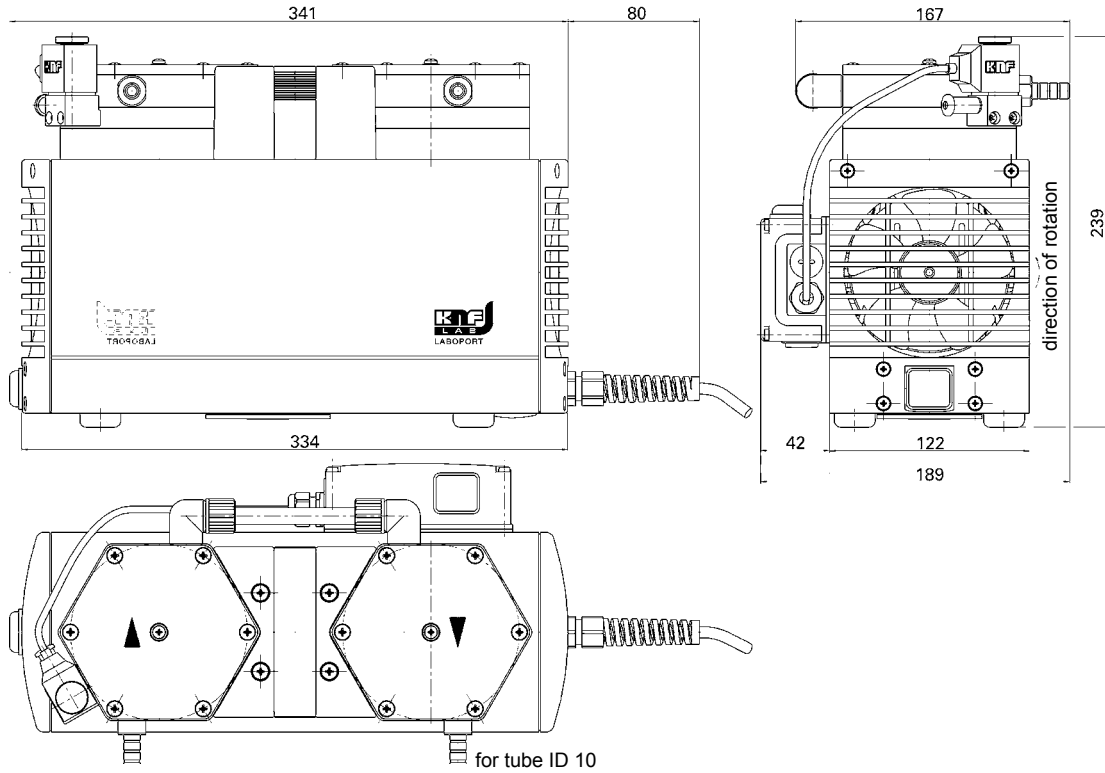
Weight [kg]	12.9
Hose connections	ID 10
Dimensions W x H x D [mm]	189 x 239 x 341
Permissible media and ambient temperature [°C]	+5 ... +40

ACCESSORIES

	ID
Spares kit	057359

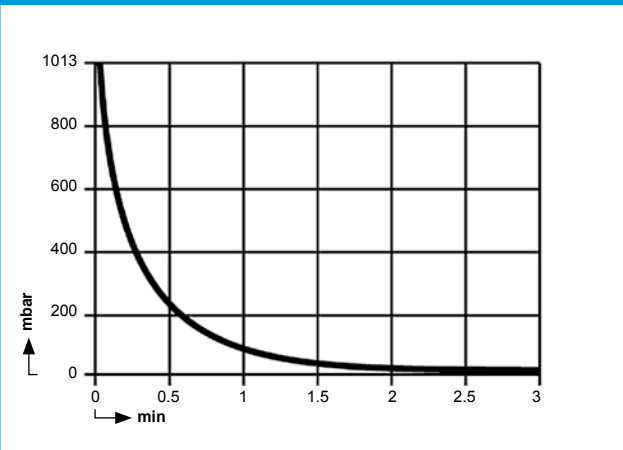
Dimensions

N 840.3 FT.40.18

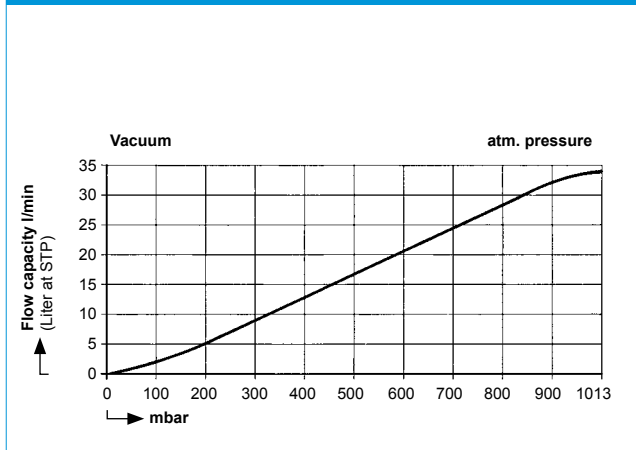


Performance characteristics

PUMP DOWN TIME FOR 10 LITER VESSEL



FLOW CAPACITY



DIAPHRAGM VACUUM PUMP N 860.3 FT.40.18



Technical features

- Pure transferring and evacuation
- Highly compatible with vapors and condensation
- Integrated KNF self-drying system ensures that condensate is quickly removed from the pump heads without the vacuum being altered. This significantly reduces process time and preserves the pump heads.
- Chemically resistant and thus ideal for use with extremely aggressive/corrosive gases and vapors
- Environmentally friendly

Technical data

Flow rate [m ³ /h] at atm. pressure	3.6
Flow rate [l/min] at atm. pressure	60
Ultimate vacuum [mbar abs.]	4
Operating pressure [bar]	1
Voltage [V]	230
Frequencies [Hz]	50
Motor protection	IP 54
Power P ₁ [W]	220
Operating current [A]	1.6
With thermal switch and power fuse	
Motors with other voltages and frequencies on request	

MATERIALS

Pump head	PTFE
Diaphragm	PTFE-coated
Valves	FFPM

OTHER DATA

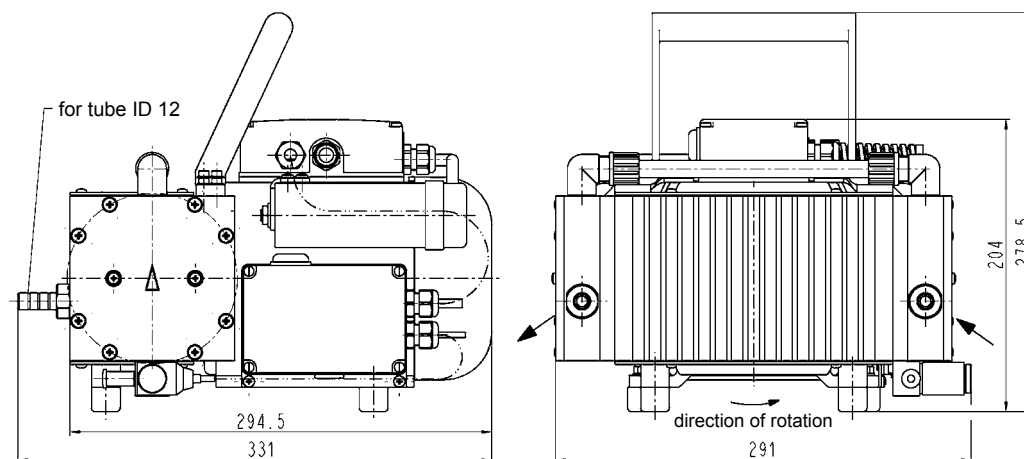
Weight [kg]	14.8
Hose connections	ID 12
Dimensions W x H x D [mm]	291 x 278 x 331
Permissible media and ambient temperature [°C]	+5 ... +40

ACCESSORIES

ACCESSORIES	ID
Spares kit	047499

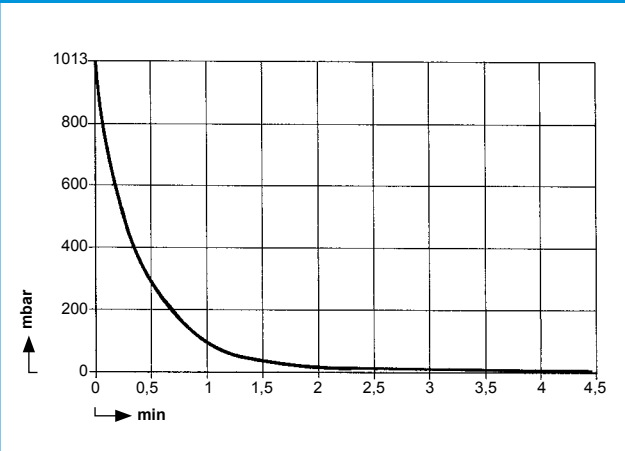
Dimensions

N 860.3 FT.40.18



Performance characteristics

PUMP DOWN TIME FOR 20 LITER VESSEL



FLOW CAPACITY

